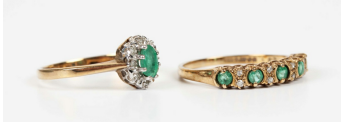


Jewellery / Wed, 22nd January 2025 / Lot 641



LOT 641

A 9ct gold, emerald and diamond oval cluster ring, claw set with the oval cut emerald within a surround of circular cut diamonds, London 1987, ring size approx M, and a 9ct gold, emerald and diamond ring, mounted with five circular cut emeralds alternating with four pairs of circular cut diamonds, London 1989, ring size approx M1/2, total weight 2.8g.

Estimate: £80 - £120

Condition Report

641 - Both in generally good condition, typical light surface scratches and wear and typical light surface abrasions to stones.

Created: Sat, 18th January 2025 11:41