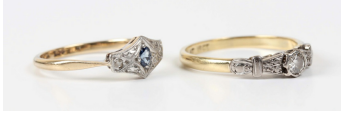


Jewellery / Wed, 27th November 2024 / Lot 524



### LOT 524

A gold, platinum and diamond single stone ring, mounted with a circular cut diamond between decorated shoulders, detailed 'Plat 18ct', weight 2.6g, ring size approx P1/2, and a gold, platinum, sapphire and diamond three stone ring, detailed '9ct Plat', weight 1.8g, ring size approx N1/2.

Estimate: £150 - £200

---

### Condition Report

Diamond single stone ring - diamond weight approx 0.15ct, colour J/K, clarity SI (diamond gradings are estimations, limited by the setting and for guidance only)

Wear to sides of the ring where it has been worn against other rings.

Sapphire and diamond ring - one rose cut diamond chipped, some very minor wear to sides of mount.

Both rings have typical scratching/scuffing to mount and setting overall.

Suggested age - their style would suggest 1920s/30s

Created: Mon, 25th November 2024 16:04