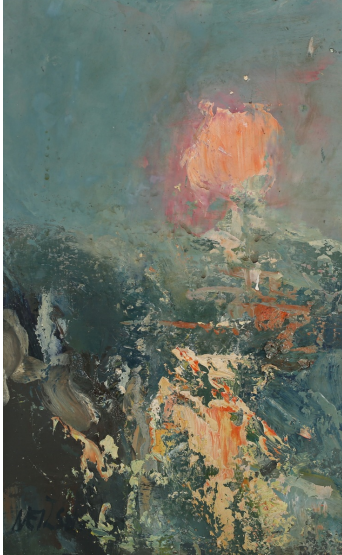


Fine Art / Wed, 4th September 2024 / Lot 138



LOT 138

Lilian Strang Neilson - Sunrise, 20th century oil on board, signed, 31cm x 19.5cm, within a stained wood frame. Note: Lilian Strang Neilson was a distinguished Scottish artist known for her evocative works capturing the rural and coastal landscapes of her native Scotland. Born in Kirkcaldy in 1938, she went on to study at the Duncan of Jordanstone College of Art from 1956-60 where her tutors included Hugh Crawford and Alberto Morrocco. She attended summer school at Hospitalfield House where she met and became friends with Joan Eardley. After a travelling scholarship to France and Italy, Lilian moved to the Scottish coastal village of Catterline sharing a studio with Joan Eardley and Annette Stephen. The three artists worked closely together, capturing the unique landscape, wild seas and ever changing atmospheric conditions of Catterline. Lilian Strang Neilson died in Aberdeen in 1998, leaving behind an enduring legacy as one of Scotland's most important modern painters. Provenance: gifted by the artist to the Late Mrs Elizabeth Rose Joyce Maude Smith in 1997.

Estimate: £1,000 - £1,500

Condition Report

138. Generally in ok original condition. Considerable surface dirt and an old uneven varnish has discoloured. Minor surface blemishes to the top right corner. UV examination does not highlight anything. Frame with some scuffs and scratches.

Created: Tue, 3rd September 2024 15:48