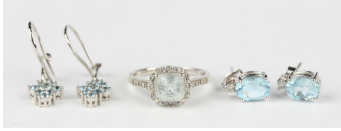


Jewellery / Wed, 21st February 2024 / Lot 682



LOT 682

A 9ct white gold, aquamarine and diamond cluster ring, claw set with the cushion cut aquamarine within a surround of circular cut diamonds between diamond three stone shoulders, ring size approx N1/2, a pair of 9ct white gold and aquamarine nine stone pendant earrings, total weight 4.3g, and a pair of blue topaz and diamond earstuds, each claw set with an oval cut blue topaz, with a circular cut diamond surmount, unmarked, the butterflies detailed '750', weight 2.4g.

Estimate: £100 - £150

Condition Report

Ring - some wear/scratching to the shank.

Diamond/aquamarine earrings - one aquamarine with abrasion to the table, both aquamarines have a few inclusions.

Pendant earrings - generally good condition.

Created: Tue, 20th February 2024 12:42