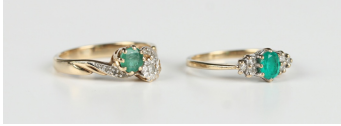


Jewellery / Wednesday, 16th March 2022 / Lot 740



### LOT 740

A 9ct gold, emerald and diamond ring, claw set with an oval cut emerald between circular cut diamond set three stone sides, London 1992, ring size approx J, and a 9ct gold ring, mounted with a circular cut emerald and a circular cut diamond between diamond set shoulders in a crossover design, import mark London 1996, ring size approx L1/2, total weight 3.8g.

Estimate: £70 - £100

---

### Condition Report

740. Emerald / diamond three stone ring - emerald is medium colour saturation and appears to be a fairly clear stone internally.

Diamonds are eight cut and appear to be fairly clear stones internally. Possibly resized in the past.

Crossover ring - emerald of pale colour saturation and a fairly included stone with a surface reaching inclusion running across the table. Diamonds look to be fairly clear stones.

Both would benefit from a clean, typical light surface wear.

Created: Tue, 8th March 2022 16:24