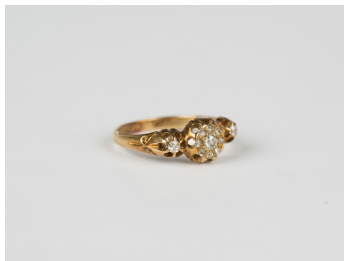


Jewellery / Wed, 8th December 2021 / Lot 509



LOT 509

An 18ct gold and diamond ring, designed as a central cluster with diamond single stone sides, mounted with cushion cut diamonds, Birmingham 1912, weight 3.3g, ring size approx P, with a case.

Estimate: £150 - £200

Condition Report

509. Central diamond has an inclusion below the table facet, visible under x10 loupe. One diamond in the cluster has a chip to the girdle/pavilion where it sits between two claws. Another diamond has a scratch/chip to its table facet. One of the two side diamonds has a chip to the table facet edge. The ring would benefit from a professional clean. General light surface wear to setting and shank.

Created: Tue, 7th December 2021 11:00