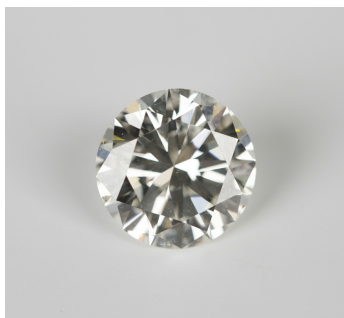


Jewellery / Wed, 8th December 2021 / Lot 650



### LOT 650

A loose circular cut diamond, weight approx 2.4ct, colour approx L, clarity approx VJ2/SI1, together with a French platinum and diamond ring mount, each shoulder mounted with a tapered baguette diamond, weight 2.6g, ring size approx J.

Estimate: £3,000 - £5,000

---

### Condition Report

650. Minor wear to ring itself, otherwise in good condition.

Diamond in good condition, no signs of wear. A few inclusions to the side, the centre is clear. Diamond draws colour with a slight brown/yellow tint, but looks good face on. No fluorescence obvious. Colour and purity is in catalogue description.

Created: Fri, 3rd December 2021 12:24