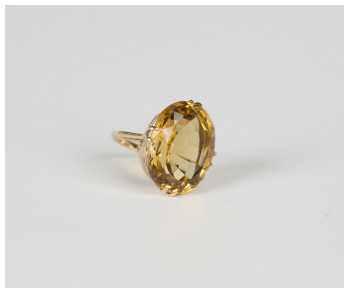


Jewellery / Wed, 8th December 2021 / Lot 544



LOT 544

A gold ring, claw set with a large oval cut citrine, detailed '18ct', weight 9.1g, ring size approx F1/2.

Estimate: £100 - £150

Condition Report

544. Small chip to facet edge between two sets of claws halfway between the table and girdle. Under 10x loupe there are some noticeable scratching and abrasions around the girdle and facets immediately above it. Few light scratches and one tiny nick to table, largely insignificant unless really searching for them. Claws in good condition. Some light scratching to mount and shank.

Created: Fri, 3rd December 2021 12:20