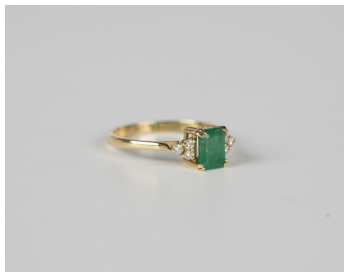


Jewellery / Wed, 8th December 2021 / Lot 526



### LOT 526

An 18ct gold, emerald and diamond ring, claw set with the cut cornered rectangular step cut emerald between circular cut diamond three stone shoulders, weight 2.6g, ring size approx P1/2, with a case.

Estimate: £70 - £100

---

### Condition Report

526. Very minor nibbles to the girdle of the emerald. Under 10x loupe a few scratches to the table, but these are hardly noticeable without magnification. Emerald has typical inclusions making it slightly cloudy internally. Medium to pale colour saturation.

Diamonds are bright white stones, with a few inclusions.

Some minor thinning to back of shank.

Created: Fri, 3rd December 2021 12:04