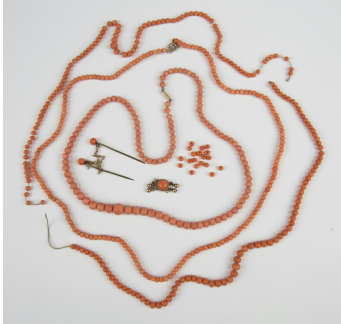


Jewellery / Wed, 3rd November 2021 / Lot 685



## LOT 685

A graduated coral bead necklace on a cylindrical snap clasp, detailed '9ct', length 47cm, a uniform coral bead necklace on a boltring clasp, length 54cm, two part strands of coral beads, a coral bead set snap clasp, a pair of coral bead set stickpins, joined with a chain, and a small quantity of loose coral beads.

Estimate: £80 - £120

## Condition Report

685 - Would recommend having the necklaces restrung.

Gold clasped necklace - fairly subdued lustre, almost matt in appearance, obvious growth lines to the beads.

Boltring necklace - dull lustre to the beads, some more rubbed than others, one or two beads have cracks, clasp in working order.

Partial necklace - requires restringing, stronger lustre and orange colour than the other necklace, lengths approx 30cm and 32cm.

Stickpins - coral in good order, pins themselves a little bent.

Clasp - in working order, coral bead in good condition, good lustre.

Loose beads - appear in good condition.

Created: Fri, 29th October 2021 16:10