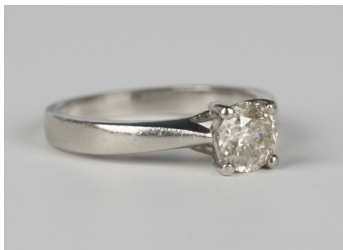


Jewellery / Wed, 13th January 2021 / Lot 635



### LOT 635

A platinum and diamond single stone ring, claw set with a circular cut diamond, detailed 'Pt 950 1.02', weight 6.2g, ring size approx P, with a case.

Estimate: £1,000 - £1,500

---

### Condition Report

The diamond draws colour and has piqué and gletz internal inclusions, the ring mount is in good condition.

Created: Sat, 19th December 2020 10:36