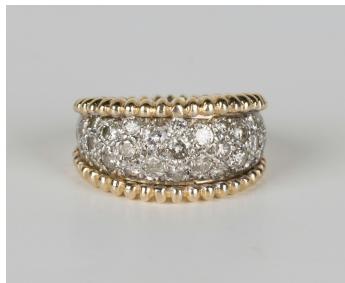


Jewellery / Wed, 4th December 2019 / Lot 580



LOT 580

A gold and diamond ring, mounted with circular cut diamonds between beaded sides in a tapering design, detailed '14K' and '100', ring size approx K1/2.

Estimate: £250 - £350

Condition Report

580. Good condition. No significant damage or repairs. Typical light surface scratches visible under magnification. Diamonds are bright and sparkly. Weight 9.6g.

Created: Fri, 29th November 2019 11:30