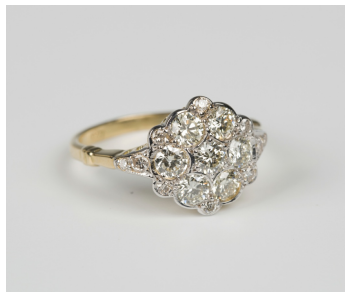


Jewellery / Wednesday, 19th June 2019 / Lot 647



### LOT 647

A gold and diamond cluster ring, mounted with the seven principal circular cut diamonds within six smaller circular cut diamonds mounted to the border, between diamond two stone shoulders, detailed '18ct', ring size approx M1/2.

Estimate: £300 - £500

---

### Condition Report

647. The principal diamonds have one or two internal inclusions and show slight florescence. The ring is a modern reproduction of an Edwardian style. Weight 3.2g.

Created: Thu, 13th June 2019 13:28