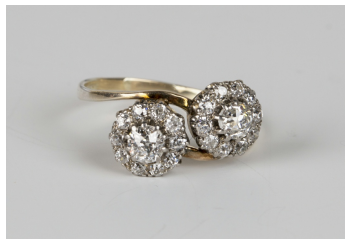


Jewellery / Wednesday, 22nd May 2019 / Lot 700



LOT 700

A gold and diamond twin cluster ring in a crossover design, each cluster claw set with a principal circular cut diamond within a surround of smaller circular cut diamonds, ring size approx Q1/2, with a case.

Estimate: £300 - £400

Condition Report

700. Colour: approx H. The diamonds are nice bright, white and sparkling stones. Clarity: approx SI on average. The approx diamond weight of each centre stone is 0.20-0.25ct.

Created: Thu, 16th May 2019 14:48