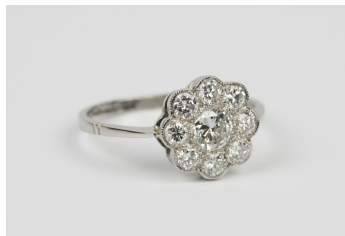


Jewellery / Wednesday, 17th April 2019 / Lot 587



### LOT 587

A white gold, platinum and diamond cluster ring, mounted with the principal circular cut diamond within a surround of smaller circular cut diamonds, ring size approx P1/2, total diamond weight approx 0.70ct, with a case.

Estimate: £800 - £1,200

---

### Condition Report

587. The ring is in generally good condition. Cut: modern round brilliant cut diamonds. The fluorescence of the stones is faint on average. Colour: approx G-H. Clarity: approx SI1-SI2. Weight 3.3g.

Created: Thu, 11th April 2019 12:13