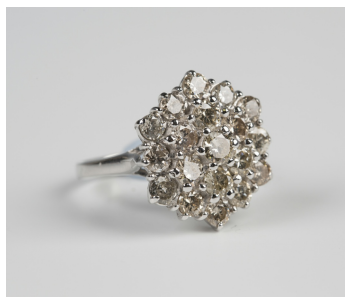


Jewellery / Wednesday, 20th March 2019 / Lot 682



LOT 682

An 18ct white gold and diamond hexagonal cluster ring, claw set with circular cut diamonds, ring size approx N, total diamond weight approx 2.20ct, with a case.

Estimate: £800 - £1,200

Condition Report

682. The ring is in generally good condition. Cut: modern and brilliant cut diamonds. The fluorescence of the stones is medium to strong. Colour: approx I-J on average. Clarity: approx SI1-SI2 on average. Weight 7.9g.

Created: Thu, 14th March 2019 16:02