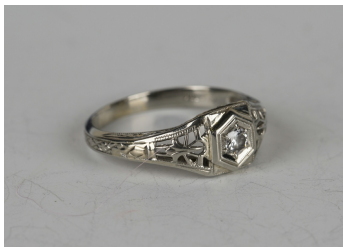


Jewellery / Friday, 28th December 2018 / Lot 335



LOT 335

A white gold and diamond single stone ring, mounted with a circular cut diamond in a hexagonal setting between pierced shoulders, detailed '18K', ring size approx K.

Estimate: £70 - £100

Condition Report

335. The gallery side of the mount has split and shank is misshapen. Typical wear and surface scratches. Weight 2.2g.

Created: Thu, 13th December 2018 16:23