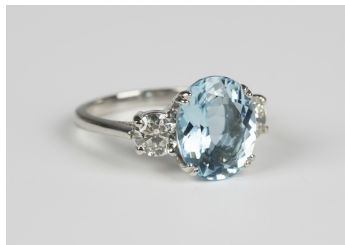


Jewellery / Wed, 28th November 2018 / Lot 615



### LOT 615

A platinum, aquamarine and diamond ring, claw set with an oval cut aquamarine between circular cut diamond set single stone sides, ring size approx M1/2, aquamarine weight approx 3.90ct, total diamond weight approx 1.00ct, with a case.

Estimate: £2,000 - £3,000

---

### Condition Report

615. Modern ring and condition as new.

Created: Mon, 26th November 2018 14:17