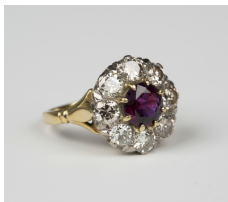


Jewellery / Wed, 3rd October 2018 / Lot 685



LOT 685

A gold, ruby and diamond nine stone cluster ring, claw set with the circular cut ruby within a surround of eight circular cut diamonds, detailed '18ct', ring size approx M, with a box.

Estimate: £1,000 - £1,500

Condition Report

685. The ruby is of medium to dark colour saturation. The surrounding diamonds slightly draw colour and have slight variation of colour, two diamonds have surface reaching inclusions to the table facets, the eight diamonds are each approx 0.20ct. Some claws are showing signs of wear. Weight 4.6g.

Created: Fri, 28th September 2018 12:55