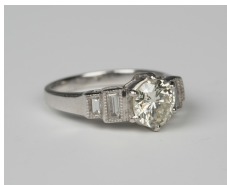


Jewellery / Wed, 3rd October 2018 / Lot 600



LOT 600

A platinum and diamond ring, claw set with the principal circular cut diamond between stepped baguette cut diamond set two stone shoulders, detailed '950', ring size approx O, principal diamond weight approx 1.70ct.

Estimate: £3,500 - £4,500

Condition Report

600. The principal round brilliant cut diamond slightly draws colour and has a few internal pique inclusions. The shoulder diamonds are whiter and look to be fairly clear stones. The ring is in overall good condition, with typical light surface scratches. Carat approx: 1.70, Colour approx: K-L, Clarity approx: SI2-I1. Weight 6.6g.

Created: Thu, 27th September 2018 15:52