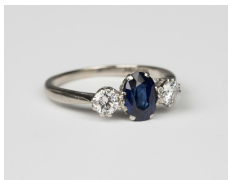


Jewellery / Wed, 3rd October 2018 / Lot 510



LOT 510

A white gold, platinum, sapphire and diamond three stone ring, claw set with the oval cut sapphire between two circular cut diamonds, detailed '18ct - Pt', ring size approx P1/2.

Estimate: £500 - £700

Condition Report

510. The sapphire is of medium colour saturation. The diamonds look to be attractive white stones and internally fairly clear. There is slight evidence of wear to the sides of the mount. The claws are sound. There are one or two minor surface nicks to the facet edges of the sapphire. Weight 3.8g. Each diamond approx 0.20ct. Sapphire approx 0.75-0.80ct.

Created: Mon, 1st October 2018 10:53