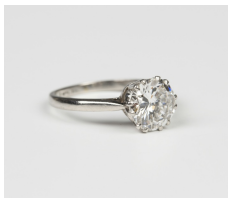


Jewellery / Wed, 5th September 2018 / Lot 611



## LOT 611

A platinum and diamond single stone ring, claw set with a round brilliant cut diamond, ring size approx L1/2, diamond weight approx 2.00ct, with a case.

Estimate: £3,000 - £5,000

---

## Condition Report

611. The diamond weighs approx 2.00ct. Colour: approx G-H. Clarity: approx SI1. There are a few minor marks. There are a few small chips which would easily polish out. The stone is very similar to a round brilliant cut but isn't quite, sort of transitional cut which has an unusually flat table. Weight 3.5g.

Created: Thu, 30th August 2018 12:10