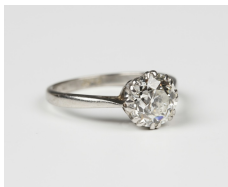


Jewellery / Wed, 5th September 2018 / Lot 610



LOT 610

A platinum and diamond single stone ring, claw set with an old European cut diamond, ring size approx M1/2, diamond weight approx 1.70ct, with a case.

Estimate: £3,000 - £5,000

Condition Report

610. The diamond weighs approx 1.70ct. Colour: approx H-I. Clarity: approx VS2-SI1. The stone is typical old cut. Weight 3.6g.

Created: Thu, 30th August 2018 12:09