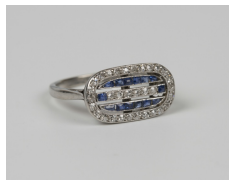


Jewellery / Wednesday, 8th August 2018 / Lot 660



LOT 660

A platinum, diamond and sapphire oval cluster ring, mounted with a row of six small cushion shaped diamonds within an openwork surround of calibre cut sapphires and an outer border mounted with small cushion shaped diamonds, detailed 'PLAT', circa 1930, ring size approx J1/2, with a case.

Estimate: £300 - £400

Condition Report

660. The diamonds have one or two tiny inclusions, otherwise attractive white stones. The sapphires are of medium to pale colour saturation. The sapphires have a degree of surface wear. Otherwise in generally good condition. Weight 3.7g.

Created: Thu, 2nd August 2018 11:35