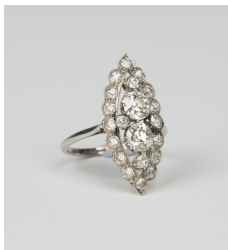


Jewellery / Wednesday, 8th August 2018 / Lot 595



LOT 595

A platinum and diamond marquise shaped cluster ring, claw set with the two principal cushion shaped diamonds to the centre, otherwise set with smaller cushion shaped diamonds in an openwork design, detailed 'Platinum', ring size approx Q1/2.

Estimate: £700 - £900

Condition Report

595. There is slight variation of cut to the old cut diamonds. One or two of the smaller diamonds have surface reaching inclusions. Some of the diamonds have a few piqué inclusions. There is some lead solder visible at the back of the ring where it has probably been re-constructed in the past. The centre section is probably in association with the marquise shaped surround. In overall good condition. Weight 5.5g.

Created: Thu, 2nd August 2018 11:18