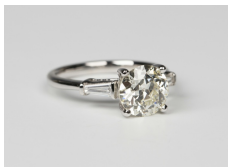


Jewellery / Wednesday, 8th August 2018 / Lot 535



LOT 535

An 18ct white gold and diamond ring, the principal claw set diamond between tapered baguette cut single stone shoulders, ring size approx L1/2, principal diamond weight approx 1.98ct, with an AnchorCert Gem Lab report.

Estimate: £8,500 - £9,500

Condition Report

535. The ring is in very good condition. Weight 3.8g.

Created: Thu, 2nd August 2018 10:56