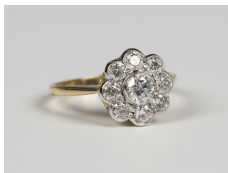


Jewellery / Wednesday, 11th July 2018 / Lot 698



LOT 698

An 18ct gold and diamond cluster ring, collet set with the principal circular cut diamond within a surround of eight smaller circular cut diamonds, detailed '18ct', ring size approx O1/2, total diamond weight approx 0.75ct, cased.

Estimate: £700 - £1,000

Condition Report

698. Mid to late 20th century. Diameter of ring head 1.2cm. Overall generally good condition. Typical light surface wear and scratches but no significant damage or repairs. Diamonds are bright and sparkly. Some typical inclusions visible under magnification.

Created: Sat, 7th July 2018 09:23