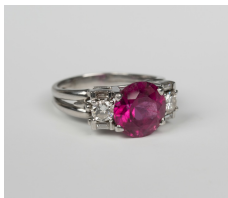


Jewellery / Wednesday, 11th July 2018 / Lot 535



LOT 535

A pink tourmaline and diamond ring, claw set with a circular cut pink tourmaline between circular cut and baguette diamond three stone shoulders, ring size approx N.

Estimate: £300 - £400

Condition Report

535. The pink tourmaline is of medium colour saturation with a few internal inclusions. The shoulder diamonds look to be fairly clear stones. In overall condition good. Weight 7.7g.

Created: Thu, 5th July 2018 10:49