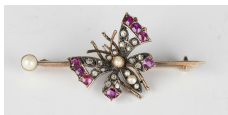


Jewellery / Wednesday, 11th July 2018 / Lot 488



## LOT 488

A late Victorian rose cut diamond, ruby and half-pearl bar brooch, designed as a butterfly with outspread wings, width 5cm, with a box.

Estimate: £180 - £220

---

## Condition Report

488. The rose diamonds have a few internal inclusions, some surface reaching and there is variation of cut to the diamonds. There is some variation of colour saturation to the rubies and some rubies have a few internal inclusions. The gemstones to the eyes are missing. The pearls are of creamy lustre. In otherwise good condition. Weight 5.1g.

Created: Thu, 5th July 2018 10:47