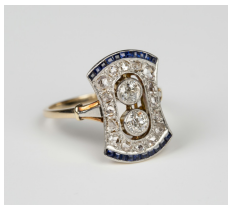


Jewellery / Wednesday, 13th June 2018 / Lot 568



LOT 568

A gold, diamond and sapphire panel shaped ring, collet set with the two principal circular cut diamonds within an openwork surround, mounted with rose cut diamonds between curved rows of square cut sapphires, ring size approx Q, with a case.

Estimate: £1,200 - £1,800

Condition Report

568. The two principal diamonds have a few piqué and gletz inclusions. The surrounding diamonds are slightly irregularly shaped and have one or two internal inclusions. There is some slight wear to the sapphires. In overall generally good condition. Weight 4.6g.

Created: Thu, 7th June 2018 12:05