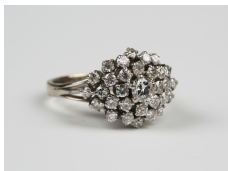


Jewellery / Wednesday, 16th May 2018 / Lot 560



LOT 560

A white gold and diamond cluster ring, claw set with circular cut diamonds with the principal diamond mounted at the centre, ring size approx M1/2.

Estimate: £400 - £600

Condition Report

560. The diamonds are attractive clear white stones. Some of the claws are a little worn. There are no marks to the shank, suggested age 1970s. Weight 6.8g.

Created: Thu, 10th May 2018 14:36