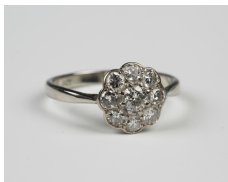


Jewellery / Wednesday, 16th May 2018 / Lot 510



## LOT 510

A white gold and diamond nine stone cluster ring, mounted with the principal circular cut diamond within a surround of eight smaller circular cut diamonds, detailed '18ct', ring size approx Q, total diamond weight approx 0.80ct, with a case.

Estimate: £400 - £600

---

## Condition Report

510. Cut: modern round brilliant cut diamonds. Colour: H-J approx, faint florescence. Clarity: approx SI2-I1. The diamonds have a few pique inclusions, some of which are breaking the surface table facet of one of the diamonds. The ring is in otherwise good condition. Weight 2.7g. Size of ring head 1.1cm, height of ring head 0.4cm. We would suggest ring is from the 2nd half of the 20th century.

Created: Fri, 11th May 2018 16:15