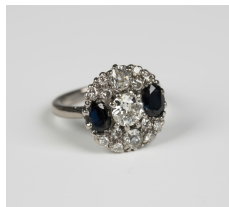


Jewellery / Wednesday, 18th April 2018 / Lot 550



LOT 550

A diamond and sapphire circular cluster ring, claw set with the principal cushion shaped diamond between two smaller cushion shaped diamonds and two oval cut sapphires, otherwise set with four groups of three circular cut diamonds, ring size approx K, total diamond weight approx 1.20ct, total sapphire weight approx 0.50ct.

Estimate: £1,300 - £1,600

Condition Report

550. Cut: oval faceted cut sapphires with old European cut diamonds. Colour: sapphires are a very deep blue colour, diamonds are approx H-I, faint on average. Clarity: diamonds are approx SI1-SI2. Carat: diamonds approx 0.06ct in total. In good condition commensurate with age. The twelve smaller diamonds are more modern circular cut brilliants. The ring would benefit from careful professional cleaning. There are file/test marks within the shank. Weight 6.5g.

Created: Thu, 12th April 2018 10:49