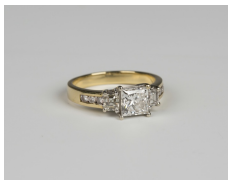


Jewellery / Wednesday, 21st March 2018 / Lot 530



## LOT 530

A gold and diamond ring, claw set with the principal square princess cut diamond between two variously cut rectangular diamonds and circular cut diamond set three stone shoulders, ring size approx N1/2, with an International Diamond Laboratories diamond certificate stating the principal diamond weight 1.26ct, colour grade F and clarity SI1.

Estimate: £2,000 - £3,000

---

## Condition Report

530. See certificate. Colour: strong florescence. In very good condition. Weight 4.4g.

Created: Thu, 15th March 2018 10:59