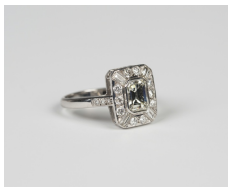


Jewellery / Wed, 21st February 2018 / Lot 545



LOT 545

A white gold and diamond ring, mounted with the principal emerald cut diamond within a surround of circular cut diamonds and baguette diamond corner stones, between diamond three stone shoulders, detailed '18ct', ring size approx O, principal diamond weight approx 1.00ct, with a case.

Estimate: £2,800 - £3,200

Condition Report

545. Cut: emerald cut centre diamond with modern round brilliant cut and baguette cut diamonds. Colour: approx I-J, strong fluorescence. Clarity: approx VS1-VS2. Carat: surrounding diamonds approx 0.25ct-0.35ct. In very good condition. Weight 3.8g.

Created: Thu, 15th February 2018 11:32