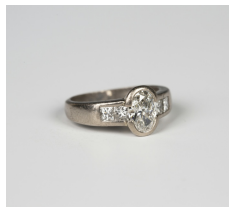


Jewellery / Wed, 24th January 2018 / Lot 556



## LOT 556

A platinum and diamond ring, collet set with the principal oval cut diamond between two pairs of princess cut diamonds, the shank unmarked, ring size approx K 1/2, principal diamond weight approx 0.80-0.85ct, with a case.

Estimate: £1,600 - £2,000

---

## Condition Report

556. Cut: oval cut centre diamond with princess cut side diamonds. Colour: approx G-H, medium fluorescence. Clarity: approx VS1-VS2. Carat: centre stone measurements, length approx 7.5mm, width approx 5.5mm, depth approx 3mm, side stones approx 0.30ct-0.40ct total. There is surface wear and nicks to the mount particularly to the sides of the ring where it has rubbed against other rings.

## Additional Information

556. Weight 5.6g.

Created: Thu, 18th January 2018 11:58