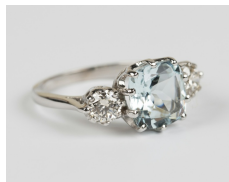


Jewellery / Wed, 24th January 2018 / Lot 518



## LOT 518

An aquamarine and diamond ring, claw set with the cushion shaped aquamarine between two circular cut diamonds, ring size approx M, aquamarine weight approx 2.00ct, total diamond weight approx 0.50ct, with a case.

Estimate: £800 - £1,200

---

### Condition Report

518. Cut: modified square cut aquamarine with modern round brilliant cut diamonds. Colour: aquamarine is light blue, the diamonds are approx tinted yellow, strong florescence. Clarity: the aquamarine is clear to the eye, the diamonds are approx S11-S12. Carat: aquamarine, width/length approx 8mm, depth approx 4.9mm. In very good condition.

### Additional Information

518. Weight 3.4g. Not marked but it is almost certainly white gold.

Created: Mon, 22nd January 2018 15:05