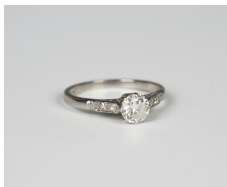


Jewellery / Friday, 29th December 2017 / Lot 265



## LOT 265

A platinum and diamond solitaire ring, claw set with the principal circular cut diamond between diamond two stone shoulders, detailed 'Plat', ring size approx L, principal diamond weight approx 0.50ct.

Estimate: £300 - £400

---

## Condition Report

Cut: modern round brilliant cut diamond. Colour: approx. H-I, medium fluorescence. Clarity: approx. VS1-VS2. Carat: centre diamond width/length approx. 5.2mm, depth approx. 2.9mm, side diamonds approx. 0.55 in total. There is some wear to the claws of the principal diamond. There is some wear to the side of the mount as a result of contact with other rings. The ring would benefit from careful professional cleaning. Weight 2.8g.

Created: Thu, 14th December 2017 13:36