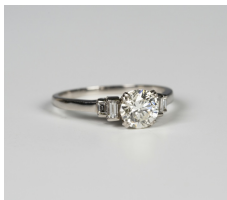


Jewellery / Friday, 29th December 2017 / Lot 259



LOT 259

A diamond ring, claw set with the principal circular cut diamond between emerald cut diamond two stone graduated shoulders, ring size approx N, principal diamond weight approx 0.90ct, with a case.

Estimate: £2,000 - £2,500

Condition Report

Cut: modern round brilliant cut centre diamond, baguette cut side diamonds. Colour: approx. J-K, medium fluorescence. Clarity: approx. VS2-SI1. Carat: centre diamond width/length approx. 6mm, depth approx. 4mm, side diamonds approx. 0.20ct in total. In very good condition. Weight 3.2g.

Created: Thu, 14th December 2017 13:35