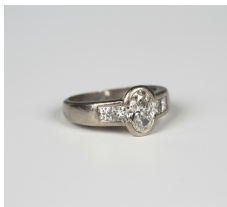


Jewellery / Friday, 29th December 2017 / Lot 250



## LOT 250

A platinum and diamond ring, collet set with the principal oval cut diamond between two pairs of princess cut diamonds, the shank unmarked, ring size approx K 1/2, principal diamond weight approx 0.80-0.85ct, with a case.

Estimate: £2,000 - £3,000

---

## Condition Report

Cut: oval cut centre diamond, princess cut side diamonds. Colour: approx. G-H, medium fluorescence. Clarity: approx. VS1-VS2.  
Carat: centre stone measurements, length approx. 7.5mm, width approx. 5.5mm, depth approx. 3mm, side stones approx. 0.30ct-0.40ct total. There is surface wear and nicks to the mount particularly to the sides of the ring where it has rubbed against other rings.  
Weight 5.7g.

Created: Thu, 14th December 2017 13:34