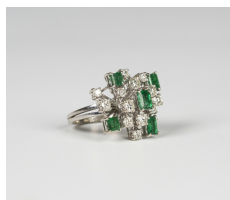


Jewellery / Friday, 29th December 2017 / Lot 245



## LOT 245

An 18ct white gold, diamond and emerald cluster ring, claw set with fourteen circular cut diamonds and five rectangular cut emeralds in an abstract design, London 1975, ring size approx M1/2, total diamond weight approx 0.65ct, total emerald weight approx 0.80ct.

Estimate: £500 - £700

---

## Condition Report

Cut: emerald cut emeralds, modern round brilliant cut diamonds. Colour: emeralds are a deep green, diamonds are approx. H-I, strong fluorescence. Clarity: emeralds show typical natural inclusions, diamonds approx. SI1-SI2. There is one significant chip to the corner of one emerald. Some of the diamonds have a few piqué inclusions otherwise in fair condition. Weight 6.6g.

Created: Thu, 14th December 2017 13:32